

NATIONAL BROKERS LIMITED

<http://nationalbrokersbd.com/>

Tea Auctioneers since 1948

TEA MARKET REPORT – Sale 40 held on Monday 6th February, 2023

CTC LEAF: 50,621 packages of Current Season teas on offer met with much less demand with heavy withdrawals.

BROKENS: There were only a few clean Brokens on offer which met with a strong demand and sold in line with quality. Other varieties where quality declined met with a limited demand and where sold recorded a drop in price. There were very heavy withdrawals in this category. Poor varieties met with limited enquiry and were generally withdrawn without bids. BLFs met with a fairly good interest at steady rates. However, there were withdrawals.

FANNINGS: Once again only a small weight of clean Fannings were available for sale which met with quite a strong demand and were generally firm to slightly easier. Other varieties witnessed a limited demand and where sold recorded a fair decline in price. There were again quite heavy withdrawals in this category. Plain poor varieties were generally neglected with heavy withdrawals. BLF teas met with a fairly good demand and were generally firm to occasionally dearer.

CTC DUST: 11,365 packages of Current Season teas on offer met with a fair demand. Bright liquoring Dusts met with fairly good demand. Mediums met with only fair demand and had some withdrawals. Plain and BLF Dusts were again an easier market with fair withdrawals. Blenders were fairly active with some interest from the Loose tea buyers.

COMMENTS: Bulk of the offerings were end of season varieties which were mostly discriminated against owing to lack of demand for these types. Blenders lent fairly good support for clean varieties whereas Loose tea buyers operated at the lower end of the market. Withdrawals were heavy this week with a decline in the average price.

Dusts were an easier market with some withdrawals.

Our catalogue: (Sale 40) Avg: Tk 192.40, Sold 52.1 %
& (Sale 39) Avg: Tk 200.31, sold 64.8 %.

Quotations – This Week – (In Taka)

Brokens	This Week	Last Week	Fannings	This week	Last Week	Dust	This week	Last Week
Large	200-210 nom	210-220 nom	Best	230-250 nom	230-245	PD	183-278	184-267
Medium	195-210	205-220	Good	210-220	215-225	RD	90-278	140-335
Small	195-215	205-225	Medium	170-190	185-200	D	100-295	111-297
Plain	120-140	130-150	Plain	130-140	140-150	CD	116-300	134-299
BLF	120-140	125-145	BLF	125-150	125-145	BLF	125-200	140-195

Exchange Rates 6th February, 2023 Sterling Pound: Tk. 123.6861 dollar: Tk. 103.0000

Top Prices – This Week

Category – CTC	Garden	Grade	Package	Price	Buyer(s)
Brokens	Zareen	GBOP	10	291/-	Mollah
Fannings	* Balisera	PF	30	270/-	HRC
Clonal Brokens	Kedarpur	GBOP(BT1)	10	340/-	GL
Clonal Fannings	Kedarpur	PF(BT1)	10	327/-	Meghna
PD/RD (Incl Clone)	Kedarpur	RD	10	353/-	Meghna
D (Incl Clone)	Kedarpur	D(BT1)	10	321/-	Meghna
CD (Incl Clone)	Kedarpur	CD(BT1)	10	341/-	Meghna

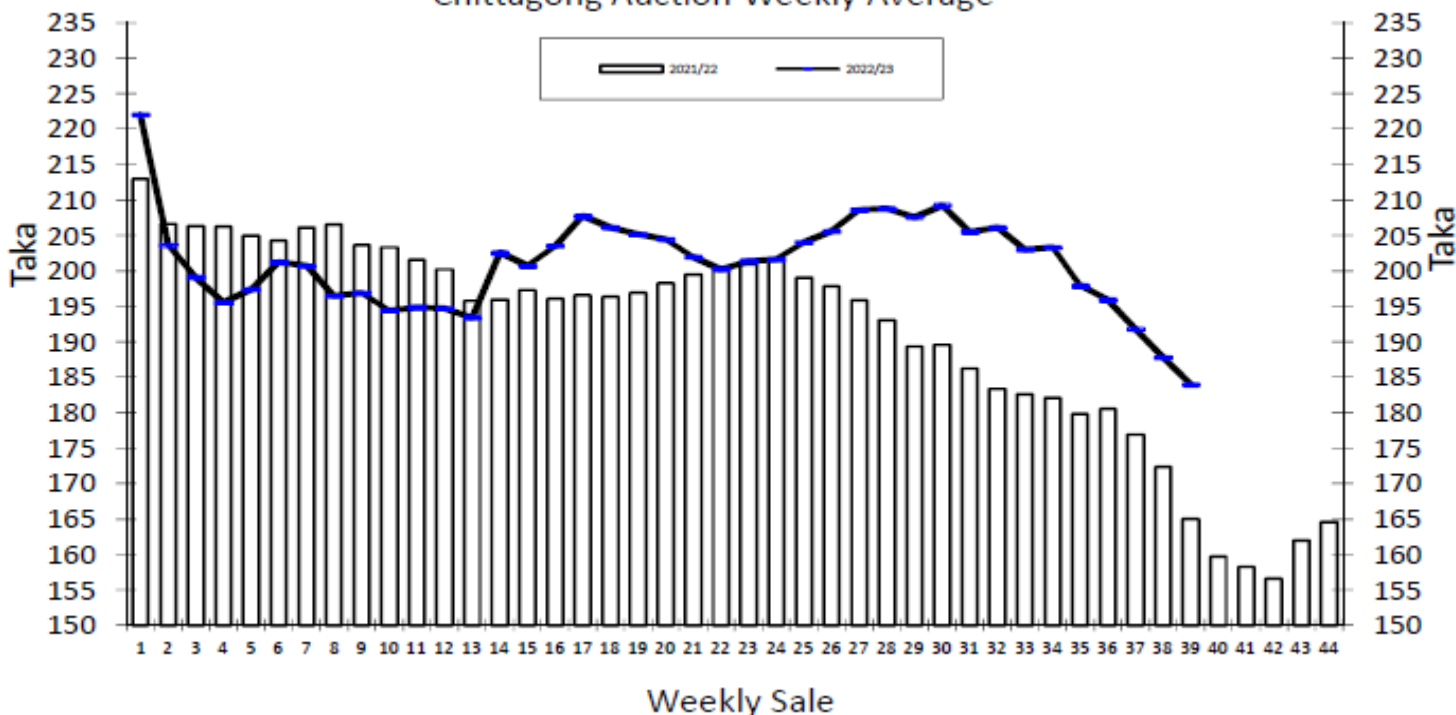
* Above price(s) realised in our catalogue

Offerings

Type	This Sale (Sale 40)				Next Sale (Sale 41)			
	Season 2022-23		Season 2021-22		Season 2022-23		Season 2021-22	
	Packages	Qty/Kg	Packages	Qty/Kg	Packages	Qty/Kg	Packages	Qty/Kg
Leaf	50,621	2,525,988	43,705	2,395,908	44,283	2,209,722	37,660	2,063,768
Dust	11,365	567,114	10,311	558,227	9,829	490,467	8,887	480,787
Total	61,986	3,093,101	54,016	2,954,135	54,112	2,700,189	46,547	2,544,555

Chittagong Auction Average: Sale 39
Season 2022/23: Tk. 183.96 & Season 2021/22: Tk. 165.03

Chittagong Auction Weekly Average



Category	For the Sale						Up-to-Date Sale						(+/-) Season 2021/22		
	Season 2021/22		Season 2022/23		Season 2021/22		Season 2022/23		Season 2021/22		Season 2022/23				
	Qty. (Kg)	Taka	Qty. (Kg)	Taka	Qty. (Kg)	(%)	Taka	Qty. (Kg)	(%)	Taka	Qty. (Kg)	(%)	Taka	Qty. (Kg)	Taka
CTC LEAF	1,491,833.0	158.61	1,540,322.5	179.58	64,416,375.6	78.5%	190.22	62,225,730.9	79.0%	195.55	195.55	195.55	195.55	-2,190,644.7	5.32
CTC DUST	362,642.2	191.45	406,456.7	200.57	17,365,437.5	21.2%	210.48	16,508,103.0	20.9%	221.05	221.05	221.05	221.05	-857,334.4	10.57
Sub-Total	1,854,475.2	165.03	1,946,779.2	183.96	81,781,813.1	99.6%	194.53	78,733,833.9	99.9%	200.89	200.89	200.89	200.89	-3,047,979.2	6.37
Orthodox	0.0	0.00	0.0	0.00	26,105.0	0.0%	104.44	0.0	0.0%	0.00	0.00	0.00	0.00	-26,105.0	-104.44
Total	1,854,475.2	165.03	1,946,779.2	183.96	81,807,918.1	99.7%	194.50	78,733,833.9	99.9%	200.89	200.89	200.89	200.89	-3,074,084.2	6.40
Green Tea	27.5	1,217.45	168.5	631.31	10,934.4	0.0%	508.35	24,779.5	0.0%	565.60	565.60	565.60	565.60	13,845.1	57.25
Oolong Tea	0.0	0.00	5.0	1,600.00	0.0	0.0%	0.00	35.5	0.0%	1,762.68	1,762.68	1,762.68	1,762.68	35.5	1,762.68
Yellow Tea	0.0	0.00	5.0	1,600.00	20.0	0.0%	1,400.00	13.0	0.0%	1,805.77	1,805.77	1,805.77	1,805.77	-7.0	405.77
Total	1,854,502.7	165.05	1,946,957.7	184.01	81,818,872.5	99.7%	194.54	78,758,661.9	99.9%	201.01	201.01	201.01	201.01	-3,060,210.6	6.47
Other (s)	0.0	0.00	0.0	0.00	253,843.2	0.3%	162.94	43,126.3	0.1%	129.18	129.18	129.18	129.18	-210,716.9	-33.76
G.Total	1,854,502.7	165.05	1,946,957.7	184.01	82,072,715.7	100.0%	194.44	78,801,788.2	100%	200.97	200.97	200.97	200.97	-3,270,927.5	6.53

Buyer	For the Sale						Up-to-Date Sale						(+/-) Season 2021/22		
	Season 2021/22		Season 2022/23		Season 2021/22		Season 2022/23		Season 2021/22		Season 2022/23				
	Qty. (Kg)	Taka	Qty. (Kg)	Taka	Qty. (Kg)	(%)	Taka	Qty. (Kg)	(%)	Taka	Qty. (Kg)	(%)	Taka	Qty. (Kg)	Taka
Export	0.0	0.00	0.0	0.00	24,143.6	0.03%	199.24	90,188.8	0.11%	134.10	134.10	134.10	134.10	66,045.2	-65.14
Internal	1,854,502.7	165.05	1,946,957.7	184.01	82,048,572.1	99.97%	194.44	78,711,599.4	99.89%	201.05	201.05	201.05	201.05	-3,336,972.7	6.61
Grand Total	1,854,502.7	165.05	1,946,957.7	184.01	82,072,715.7	100.00%	194.44	78,801,788.2	100.0%	200.97	200.97	200.97	200.97	-3,270,927.5	6.53

Crop of Major Tea Producing & Exporting Countries

Country	Month	2020	2021	2022	(+/-) 2021	2020	2021	2022	(+/-) 2021
Bangladesh *	December	6.96	6.93	7.78	0.85	86.39	96.51	93.83	-2.68
Sri Lanka	December	28.5	20.5	19.5	-1.0	278.4	299.5	251.5	-48.0
North India	December	53.6	50.8	48.0	-2.8	1035.5	1108.0	1110.4	2.4
South India	December	20.5	15.0	14.4	-0.6	222.0	235.0	230.1	-4.9
All India	December	74.1	65.8	62.4	-3.4	1257.5	1343.0	1340.5	-2.5
Kenya	November	46.6	50.7	49.2	-1.5	515.1	485.3	478.0	-7.3

* Source: Bangladesh Tea Board's Monthly Statistical Bulletin

OTHER MARKETS

KOLKATA SALE 05- 1ST & 2ND FEBRUARY, 2023

CTC: There was good demand for the better Assam at irregularly easier levels closely following quality. Clean, better liquoring medium Assams met with good demand and sold at irregular around last to easier levels. Remainder were easier. Select weight of Good and medium Dooars were barely steady to easier whilst Plainer/BLF sorts were barely steady to irregularly easier. There was some enquiry from the Exporters. Local buyers operated on the Dooars.

Tea Category USC/KG	Brokens	Fannings	Dusts
BEST ASSAMS	328-389	292-341	316-365
GOOD ASSAMS	243-292	243-280	243-304
MED ASSAMS	170-219	170-219	182-219
BEST DOOARS	243-280	243-280	NA
GOOD DOOARS	207-231	207-231	
MED/PLN DOOARS	146-195	146-182	

SILIGURI SALE 05- 6TH FEBRUARY, 2023

LEAF: Good demand. Few liquoring sorts were well competed for. Remainder followed quality. DUST: Strong demand at steady to occasionally dearer levels. Buying Pattern: Internal- Main stay. Blenders – Operated

CTC/Quotations (USC/KG)	Brokens(USC/kg)	Fannings(USC/kg)	Dust (USC/kg)
GOOD / BEST	243-341	243-341	237-292
MEDIUM / BETTER MEDIUM	170-231	170-231	170-231
COMMON / BLF	122-164	122-164	128-164

COONOOR SALE 05- 3RD FEBRUARY, 2023

DEMAND:- Good demand. **MARKET:-**The total CTC leaf teas sold this week was **92.58% (689779.72kgs)** of the total offering of **745078.98Kgs**. **BUYING PATTERN:-** The major blenders were selective and absorbed only **35.89%** of the total CTC sold. Upcountry packateers & the other regional buyers fairly active. Exporters were selective on the range of teas on offer.

CTC Leaf(USC/KG)	Best	Good	Better Medium	Medium	Plain
Larger Brokens	180-229	147-165	139-143	131-137	116-130
Medium Brokens	164-366	148-161	143-147	136-142	130-135
Smaller Brokens	170-287	154-165	145-152	141-143	135-140
Fannings	170-299	158-165	145-156	141-143	131-140

MOMBASA SALE 05- 30TH /31ST JANUARY & 1ST FEBRUARY, 2023

Improved general demand for the 226,680 packages (15,176,767.00 kilos) available in the market; 37.50% remained unsold.

CTC QUOTATIONS	BP1 – USC	PF1 – USC	PD – USC	D1 - USC
Best	255 – 494	262 – 310	270 – 302	270 – 279
Good	255 – 272	262 – 270	270 – 290	270 – 271
Good Medium	255 – 260	262 – 269	270 – 272	270
Medium (KTDA)	250 – 262	244 – 268	258 – 267	245 – 260
Medium (Plantations)	155 – 262	155 – 239	219 – 243	184 – 224
Lower Medium	117 – 232	117 – 206	135 – 230	112 – 196
Plainer	098 – 138	095 – 146	095 – 172	103 – 154